



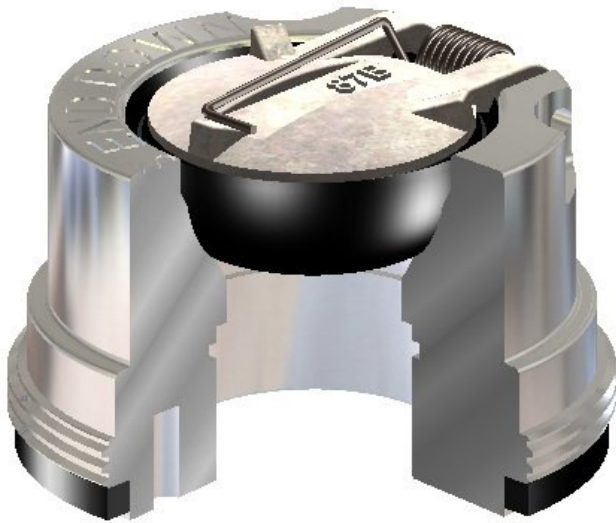
Davis Insert Float Valves

Insert Float Valve Type 900 F

The Davis Insert Float Valve Type 900 F is available for use in wells of moderate depth using API 8 round short thread or buttress casing.

Davis Insert Fill-Up Valve Type 904 F

Like the Type 900 F, the Davis Insert Fill-Up Valve Type 904 F is available for use in moderate depth wells, using API 8 round short-thread or buttress casing. This valve allows continuous fill of the casing as it is run into the hole. A drop-ball converts the 904 F into a conventional back-pressure valve.



**Insert Float Valve
Type 900 F**



**Insert Float Fill-Up Valve
Type 904 F**